



Océ
Print Exec®
Workgroup

Feel free.
Work your own way



Flexible job creation
and submission
software

- Time-saving printing of different-format documents
- On-line information about job and device status
- Efficient handling of physical documents
- Easy deployment and web-based upgrading

*Feel free.
Work your own way*



Océ Print Exec® Workgroup

Flexible job creation and submission software



Feel free. Océ Print Exec® Workgroup puts you in control of the total printing process. So whatever kind of print-related task you're doing, you can work the way you want to. From web-based document selection and submission in a wide range of formats, right through to management and handling of physical documents.

Whether you're working in an architectural, engineering or manufacturing environment, or running a central in-house printroom, Océ Print Exec Workgroup will streamline your printing, save you time and support your business processes.

Project Management

'I want a simple yet flexible tool to submit my print jobs'



Time-saving printing of different-format documents

More and more documents are being stored electronically for a wide range of reasons, for example the need to share and re-use information, legal obligations, historic relevance and many more. Documents are stored in standardised formats to prevent unauthorized alterations and ensure future accessibility.

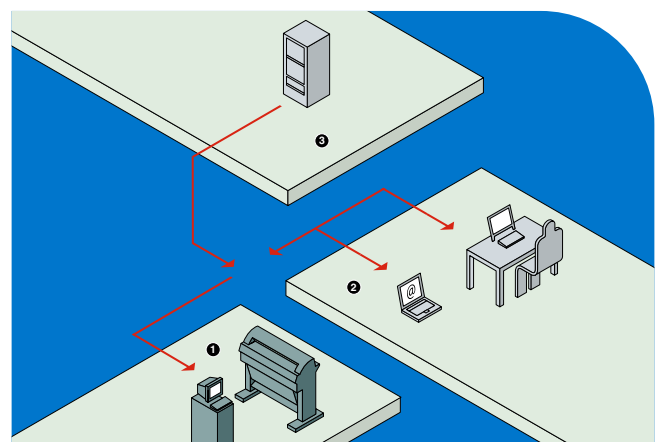
Examples of such formats are PDF, HP-GL/2 and TIFF, depending on the applications. Océ Print Exec Workgroup provides an efficient and time-saving way to access documents stored in different formats, to view, verify and select them, to build them into sets, add print settings on document and job level and to print them. And even save jobs for resubmission at a later time.

On-line information about job and device status

Once jobs have been submitted, you can constantly follow their progress from within Océ Print Exec Workgroup. So you can see instantly if any error has occurred, or you can monitor job status in the print queue at any time.

There's no need to walk up to the printer to see if a specific job is ready. Nor are jobs held up while waiting for user intervention, because this is clearly shown in the status indication. And if you ever have any doubt about what to do, extensive on-line help is always instantly available.

- 1 Runs on the Océ Power Logic® controller
- 2 Web access allows use of different operating systems
- 3 Prints multiple users' files from local or network drives



IT / Network Administration

'I want an application that is easy to deploy and maintain'



Efficient handling of physical documents

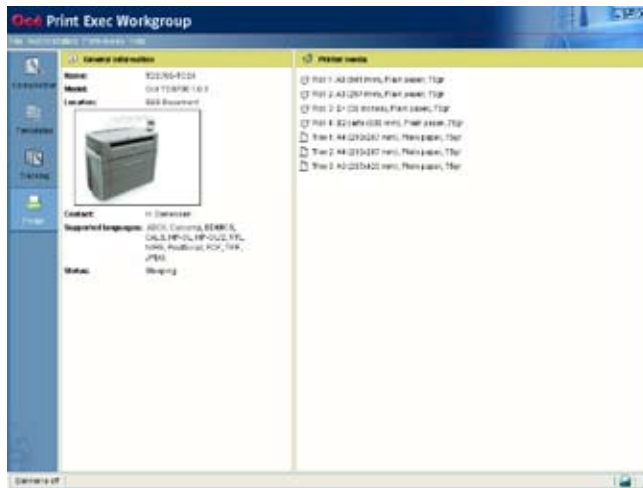
Océ Print Exec Workgroup is more than just an efficient job submission tool. It also provides you with powerful, time-saving support for handling your flow of physical documents. For example by allowing you to insert banner pages, or to add user-definable stamps, making it easy to identify specific documents, sets or complete print jobs.

These measures also help you to keep track of successive document versions and revisions. And in many cases they are essential to comply with quality procedures, for example as defined under ISO9000 and other QA programmes.

Easy deployment and web-based upgrading

Because it is pre-installed on the controller, Océ Print Exec Workgroup is quickly and easily deployed after activation. Besides, no additional server hardware is needed. Installation is initiated simply by selecting the printer URL using your standard web browser. Deployment to all connected workstations will then take place automatically.

Upgrading is just as easy, simply by selecting the upgrade package from the Océ Print Exec Workgroup administration page. The upgrade is then installed automatically on all connected workstations. If for any reason the previous version of Océ Print Exec Workgroup has to be restored, the roll-back feature does this automatically.



Direct status information

Printer

Printer name, printer description, printer location, contact, supported printer languages, status

Media

Roll, tray, media type, status

Print and inbox queue

Number of jobs, job name, user name, remarks

Dynamic GUI

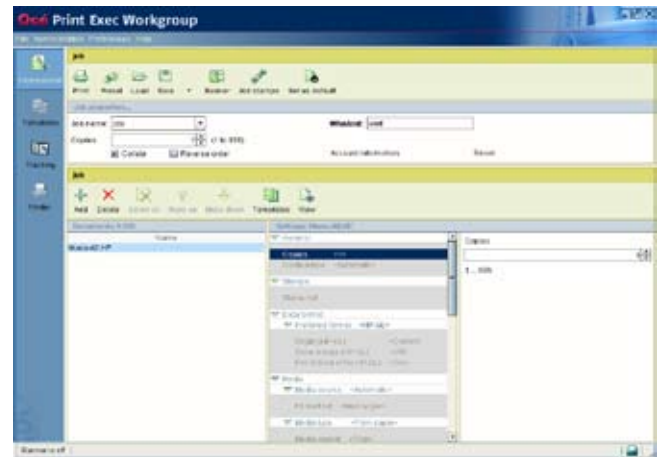
Dynamic GUI according to actual device configuration (e.g. present folding settings only if a folder is present)

Automatic job verification

Automatic job verification upon submission (e.g. warning if requested media is not loaded or if toner is low)

Job settings

- Job name
- # Copies (1 – 999)
- Collate
- Reverse order
- Ignore tickets
- Accounting: account ID, user ID
- Send to inbox
- Banner page on set, job or document level
- Stamps
- Store and retrieve jobs
- Document re-ordering



Document settings

General

- Add up to 100 documents from file system, Doc Exec archive or scan-to-file area
- Multiple file selection, drag&drop
- #Copies
- Collate
- Content type (device dependent automatic, standard, text, poster)
- Document stamps (create, load, apply)

Data format

- Automatic file format recognition, same technology as printer
- Preferred format(ASCII, Calcomp, CALS, EDMICS/C4, HP-GL, HP-GL/2, PDF, HP-RTL, JPEG (TDS450 and TCS500 only), PostScript, TIFF, NIRS)
- File format settings (pen settings, origin, merge control, etc.)

Media (device dependent)

- Source (automatic, roll, tray, manual)
- Fit method (exact, larger, best fit),
- Type (automatic, plain, vellum, transparent, polyester, etc.)
- Weight (64gr, 75gr, 110gr, etc.)
- Size (automatic, Ao-A4, E-A, E+-A+, B1 (din/carto), B2 (din/carto), 30")

Transformations

- Zoom (25%-400%, to media size, custom anisotropic, custom isotropic, to ISO/ANSI/ARCHI)
- Rotate (portrait, landscape, productive, media saving, 0, 90, 180, 270 degrees)
- Mirror (off, horizontal)

Layout

- Alignment (as on machine, center, upper left, center top, upper right, center left, center right, lower left, center low, lower right)
- Horizontal shift (right/left, 0-914mm)
- Vertical shift (up/down, 0-1219mm)
- Leading edge (add/remove, 0-400mm)
- Trailing edge (add/remove, 0-400mm)

Finishing (device dependent)

- Cut method (on image size, on page size, custom 279-1500mm)
- Deposit (integrated receiving tray, copy delivery tray)
- Fold (off, full, first fold only), method (standard, Afnor, Ericsson), orientation (automatic, portrait), width (186-230mm), length (276-310mm)
- Binding edge (15-30mm)
- Reinforcement
- Deposit (stacker, lower belt, upper belt, both belts)

Submitted job overview

- Current job submission progress
- Pending jobs re-ordering
- Re-print jobs
- Edit jobs
- Background job submission
- Automatic submission re-trial

Configurations (document settings)

- Create, Save, Delete up to 50 configurations per user
- All document settings (see above)

Stamps

- Stamps can be freely positioned and rotated
- Create, Save, Delete up to 50 stamp definitions per user
- Settings
 - Free text and several predefined attributes
 - Anchor (9 positions)
 - Horizontal and vertical shift
 - Font: style, size, color
 - Rotate

Banner pages

- Allow on user and system level
- Allow on set, job, document level
- Include company name and logo
- Predefined templates, including free text

File preview

- Color, grey-scale, black & white files
- Same technology for viewing and printing
- Zoom: best fit, actual size, zoom in, zoom out
- Rotate
- Document information: name, size, zoom factor, rotation

Direct hot links to

- www.oce.com
- Scanned documents download
- Software download (Océ, Java)
- Administration (activation, upgrade, patch, back-up & restore)

Localization

- English US, French, German, Italian, Spanish, Portuguese, Dutch, Danish, Finnish, Swedish, Hungarian, Czech, Polish, Russian, Norwegian, Japanese, Chinese (simplified and traditional)

Supported printers

- Océ TCS400 2.2.2 and higher
- Océ TCS500 1.0 and higher
- Océ TDS400 2.0 and higher
- Océ TDS450 3.0 or higher
- Océ TDS600 4.0 and higher
- Océ TDS800 2.0 and higher
- Océ TDS860 1.0 and higher

Recommended configuration

- Microsoft Windows (2000, XP, XP 64-bits), Solaris (8 or 9), MacOS (10.2 or higher) (without viewing)
- Internet Explorer 5.0 or higher, Netscape Navigator 6.x or 7.x, Firefox 1.0 or higher
- Java Plug-in 1.4.2_07 or higher, Java Advanced Imaging 1.1.2 or higher (viewer)
- no additional hardware needed

Beyond the Ordinary



Printing for Professionals

Building a sustainable business has always been one of our core business principles. We do this by developing products and services that add value to the document processes of our customers, while minimizing environmental impact. And we conduct our business activities in a socially responsible manner aimed at preventing health, safety and environmental risks.

Océ Wide Format Printing Systems Partners and Awards



Océ helps the people who make our world. Companies everywhere use Océ technical documentation systems in manufacturing, architecture, engineering and construction. Each week, high speed Océ printing systems produce millions of transaction documents such as bank statements and utility bills. And in offices around the world, people use Océ professional document systems to keep the wheels of business and government turning. Océ is also at work in publishing on demand, newspaper production, document management outsourcing and wide format colour for spectacular display graphics. It all helps our professional customers go 'Beyond the Ordinary' in printing and document management.

© 2007 Océ. Illustrations and specifications do not necessarily apply to products and services offered in each local market. Technical specifications are subject to change without prior notice. All other trademarks are the property of their respective owners.

For information and services, visit us at:

www.océ.com