



# Océ

## Print Exec® LT

### 1.3.14 Windows

# Make print management easy



#### Minimal configuration

- PC Pentium 100 Mhz
- 64 MB RAM
- 256 MB hard disk for installation
- 50 MB hard disk run time

#### Supported Operating Systems

- Windows 2000
- Windows XP
- Windows Server 2003
- Windows Vista

#### Print job management

- Job creation, deletion, selection, ordering, copy, copy to other printer
- Up to 30 jobs

#### Print job composition

Document add, remove, order, change settings, change attributes, apply template

#### Job description

- Accounting: name, user ID, account ID
- Settings: number of copies, collate, reverse order, send to inbox, associated printer

#### Document settings (Device dependent)

- Number of copies (1-999)
- Collate (by page, by set)
- File format (ASCII, Calcomp, CALS, EDMICS/C4, JPEG, HP-GL, HP-GL/2, Postscript, PDF, TIFF, NIRS)
- Content type (standard, text, poster, automatic)
- Colour mode (colour, monochrome)
- Quality mode (draft, normal, high)
- Stamping (Océ 9800/9700 only)
- Pen settings
- Media: media type (plain paper, transparent, ...), media source (roll, manual, automatic), media size (automatic, A0, A1, ...), media fit (exact, next larger, ...), media weight
- Layout: leading/trailing edge, shift

- Transformation: zoom, rotate, mirror
- Finishing: output deposit (stacker, belt, ...), folding (full, first fold, ...), reinforce, cutting method (plot size, standard, ...), punch

#### Printers

Automatic printer configuration, printer information, status, installed options, loaded media, job queue

#### Configurations

Create, remove, change, copy, set as default, associate to printer, apply to document, apply to job

#### Automatic Language Sensing

Language recognition: ASCII, BGL, Calcomp, CALS, EDMICS, HP-GL, HP-GL/2, RTL, Postscript, PDF, TIFF, VDF, NIRS, JPEG

#### File ticket recognition

- Interpreted: OJT, RCF
- Recognised: PjL, CCRF

## Real-time device feedback (TDS devices)

- Status information: media feeder (roll, tray) status, loaded media type, loaded media size, loaded media weight, printer name, printer location, printer status, folder status, supported file formats, administrator
- Job queue information: number of jobs in queue (with user name, job name, status, etc)
- Max. number of devices: up to 30 printers
- Supported devices: Océ TCS400, Océ TCS500, Océ TDS300, Océ TDS320, Océ TDS400,

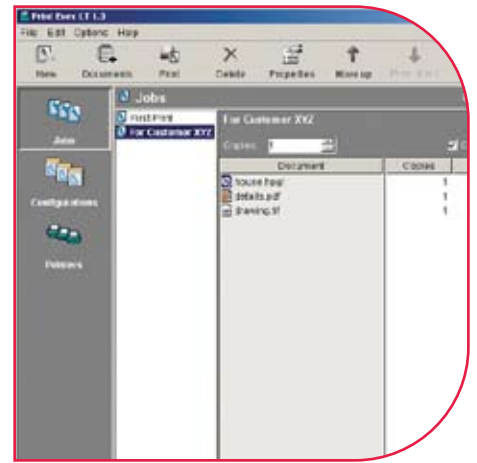
Océ TDS450, Océ TDS600,  
Océ TDS800, Océ TDS860, Océ 9300,  
Océ 9400-II, Océ 9600, Océ 9700,  
Océ 9800, Océ 5250

## Localisation

Languages: English, French, German, Italian, Portuguese, Spanish, Dutch, Danish, Swedish, Norwegian, Finnish, Czech, Hungarian, Polish, Japanese, Chinese (simplified and traditional)

## Licenses

Additional licenses can be purchased as needed.



Building a sustainable business has always been one of our core business principles. We do this by developing products and services that add value to the document processes of our customers, while minimizing environmental impact. And we conduct our business activities in a socially responsible manner aimed at preventing health, safety and environmental risks.

## Environmental Certifications



**Mixed Sources**  
Product group from well-managed forests and other controlled sources  
www.fsc.org Cert no. SCS-COC-00856  
© 1996 Forest Stewardship Council

## Awards



## Partners Certifications



For information and services, visit us at [www.oce.com](http://www.oce.com)



**Printing for Professionals**

© 2008 Océ. Illustrations and specifications do not necessarily apply to products and services offered in each local market.

Technical specifications are subject to change without prior notice. All other trademarks are the property of their respective owners.